



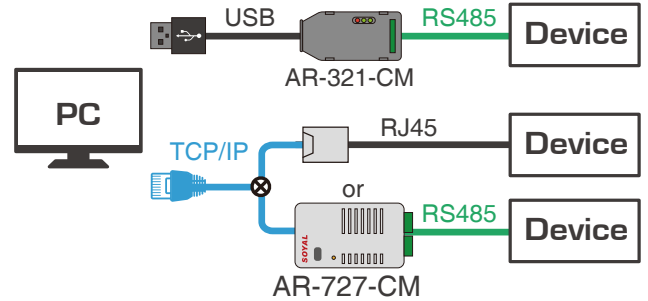
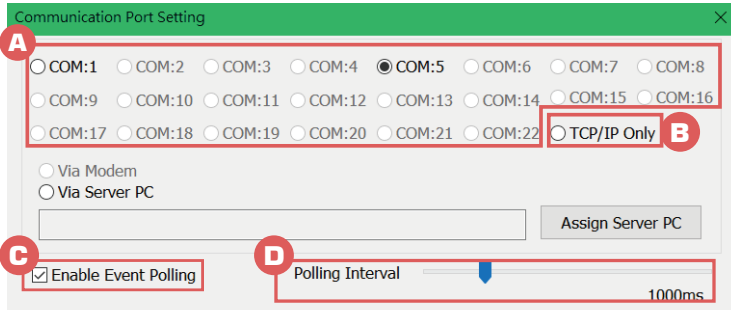
701 Server

701 Server Quick Guide

SOYAL®

701 Server serves as a bridge communication between host PC and access controller. It functions as a communication setting, communication status check (online/offline), controller parameter, and time attendance presetting.

STEP 1. COM - Select your wiring method

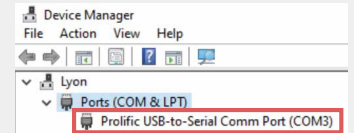


A B - Select your wiring method

USB (Via AR-321-CM*; RS485 to USB Converter) select COM both **USB and Ethernet** wiring select COM (according to the USB COM Port)

Ethernet (Via Ethernet cable or AR-727-CM, RS485 to Ethernet Converter) select TCP/IP only

* AR-321-CM required USB driver installation. To check what is your AR-321CM COM port, right click on Windows ICON >> Device Manager >> Ports (COM & LPT) >> Prolific USB-to-Serial Comm Port (COMXX) is your COM Port for AR-321CM.



Note: below setting is unnecessary to check, you can leave it like default setting.

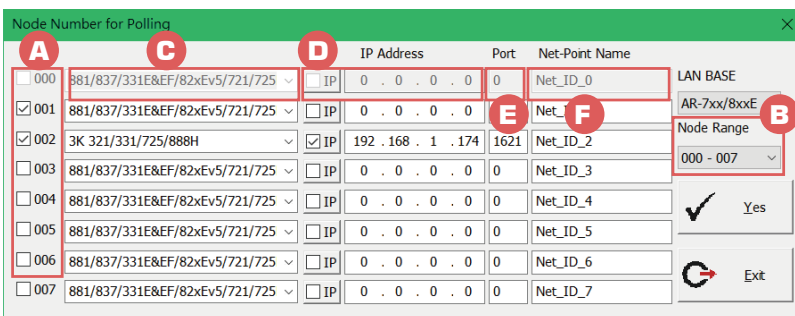
C - Enable Event Polling

by ticking Enable Event Polling will polling all real time transaction log on 701 Client and unticked it will stop the polling

D - Polling Interval

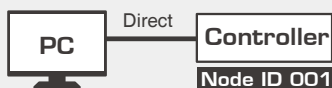
Polling Interval is defining interval of event polling is received by the software. For **small system** we recommend to set it to 1000ms (polling per min.) for **bigger system**, we recommend to set it to 100ms.

STEP 2. LAN - configuration of devices access point

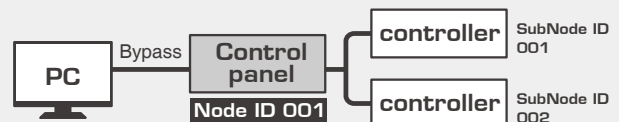


A - Node ID setting

Each controller has unique identity called Node ID to distinguish one from another. The default value for each controller Node ID is 001 (please change the node ID controller more than one unit on the system).



If your controller is directly wired to the PC without additional control panel (direct), you can enter the controller Node ID



If your controller is wired through control panel (bypass), you enter the control panel Node ID. The controllers below the control panel is recognized as SubNode ID

B --- Node Range

One page contains configurations for 7-8 controllers. Change the Node Range for the other Node ID setting in range.

C --- Selecting Controllers Type

- **TCP_IO :**
for AR-727CM-IO and AR-401-IO-0808R-U2 series with TCP/IP interface
- **RS485_IO :**
for AR-401 and AR-403 I/O module series with RS485 interface
- **881/837/331E&EF/82XEv5/721/725 :**
for Enterprise Series (E Series) controller and AR-716-E16 control panel
- **721E_1024 :**
for dual WG control panel AR-716-E02
- **3K 321/331/725/888H :**
for Home Series (H Series) controller that support 3000 user interface
- **716E V3/Ei :**
for AR-716-E18 control panel
- **323D/321/888W/721/757/737/723 :**
for Home Series (H Series) controller that support 1000 user interface

D --- TCP/IP configuration

This step is necessary for controller wired with Ethernet. Skip this step and left it untick and blank if your controller is wired via USB instead.

Step 1. Tick the IP

Step 2. Input the IP address of the controller (default IP address is 192.168.1.127)

E --- Port Setting

Each controller default for is **1621**, thus you need to type 1621 on the PORT field.

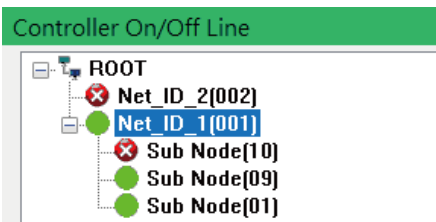
Other case that your controller PORT is not 1621:

If you are wiring through AR-727CM via CH2, the PORT is **1623**.

F --- Net-Point Name

You can give your access controller a name to distinguish it from one another. Although it is already distinguished by its Node ID, but by giving Net-Point Name. For example: Node ID 001 is Main Entrance so you can type 'Main Entrance'. Skip this step if it is unnecessary for you.

STEP 3. LINE – Connection Status



Through this page, you can monitor and see the real-time connection status for control panel and controller.

- means online; Hardware wiring and configuration setting is correct.
- ✗ means offline; Either hardware wiring or configuration setting is incorrect. (Please check the wiring by checking the manual again and check the configuration setting mentioned above)

STEP 4. Control Panel Setting

Control Panel setting for AR-716-E18 is set through → [7. 716E]

AR-716-E16 is set through → [721E]

If controller is online, you configure site plan via 701 Client Software.

